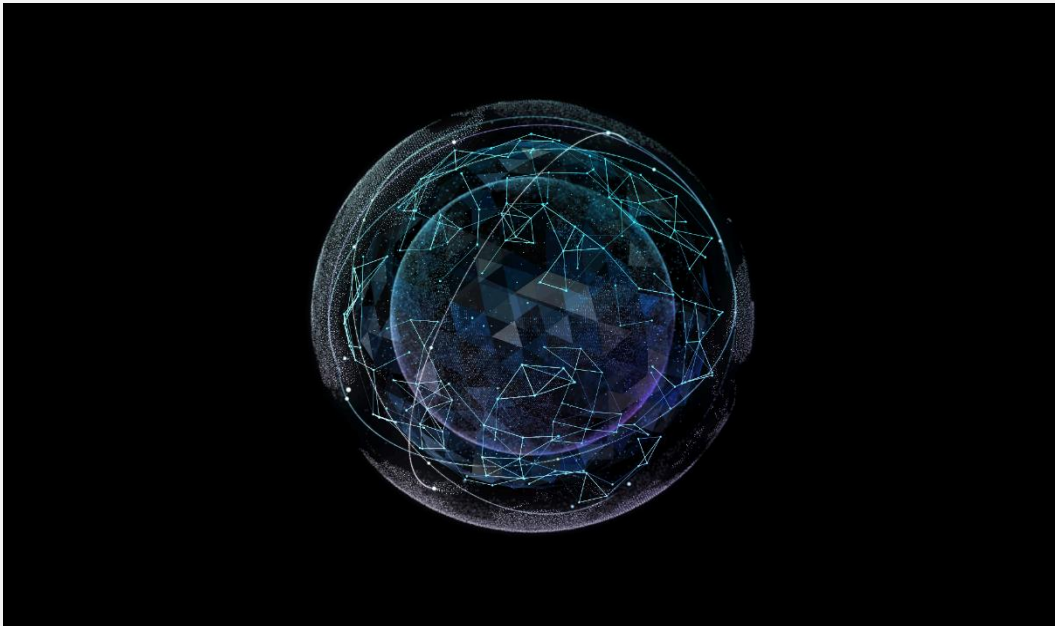


Luxembourg



## Financial Risk Solutions Analyst (m/f) - Job based in Luxembourg

Our Capital Markets experts are specialized in risk management advisory, quantitative risk reporting solutions and valuation of complex financial instruments for banks and investment funds.

### **You will have the opportunity to:**

- Assist our clients in the implementation or review of quantitative risk solutions, with a focus on market, liquidity and credit risk
- Ensure the delivery of high quality risk solutions and contribute to the development and improvement of our internal risk platform
- Develop an expertise in valuation, risk modelling and statistical analysis of financial and derivatives assets
- Be directly involved in client on-boarding projects and provide regular support to client queries
- Participate in the on-going improvement of our risk platform's processes and our risk libraries
- Participate in the development of our market eminence through marketing support preparation (brochures, articles, clients' presentation)

### **To fit in the role, you also:**

- Hold a Master's degree in Finance, Applied Mathematics or Business Engineering
- Have a first experience or internship in the financial sector

- Show strong quantitative skills in financial risk, derivatives pricing and mathematics
- Show proven IT skills and excellent knowledge of Excel VBA, Access and Matlab
- Be rigorous, quality driven, result-oriented with excellent analytical and synthetic skills
- Demonstrate an ability to work autonomously as well as be part of a team
- Be fluent in French and English. German is considered an asset

### **We want to hear from you! Join us and...**

- Further develop your competencies with a tailor-made training plan, exploiting our Induction Program
- Step up in your career thanks to our remarkable client portfolio
- Team up with dynamic and energetic young professionals within a challenging and knowledge sharing environment
- Enjoy and promote diversity in our multicultural teams

### **What impact will you make?**

Get to know more about Deloitte



[www.deloitte.lu](http://www.deloitte.lu) | Add Deloitte as a safe sender

#### **About Deloitte Touche Tohmatsu Limited:**

Deloitte refers to one or more of Deloitte Touche Tohmatsu Limited, a UK private company limited by guarantee ("DTTL"), its network of member firms, and their related entities. DTTL and each of its member firms are legally separate and independent entities. DTTL (also referred to as "Deloitte Global") does not provide services to clients. Please see [www.deloitte.com/about](http://www.deloitte.com/about) to learn more about our global network of member firms.

This communication contains general information only, and none of Deloitte Touche Tohmatsu Limited, its member firms, or their related entities (collectively, the "Deloitte network") is, by means of this communication, rendering professional advice or services. Before making any decision or taking any action that may affect your finances or your business, you should consult a qualified professional adviser. No entity in the Deloitte network shall be responsible for any loss whatsoever sustained by any person who relies on this communication.

© 2016. Deloitte General Services.

Designed and produced by MarCom at Deloitte Luxembourg